

# Around the New Church

SPRING 2011



FROM BOYNTON BEACH, FLORIDA

## BOYNTON BEACH OWNS PROPERTY FREE & CLEAR!

**The New Church at Boynton Beach has paid off their debt, a bold step toward becoming a healthy, self-supporting church.**

In September 2010, the New Church at Boynton Beach passed an important milestone. They made the final payment on a \$60,000 loan from the General Church that was taken out eleven years ago.

The loan was taken out in January 1999 to help finance the purchase of a parcel of land adjacent to the north end of the Church property. The interest-free loan, added to a Bill Boker grant, allowed the Boynton Beach society to purchase the \$200,000 property without incurring finance charges. This was a bold step for a small congregation—it allowed them to provide for the future growth and development of their society in a fiscally responsible way.

Six apartment units sit on the land, which provides the New Church at Boynton Beach with a steady source of income. This income has allowed the congregation to repay their loan without burdening society members financially. The upkeep has fallen to the dedicated and selfless congregation members, who have spent countless hours keeping the apartment units in good repair, collecting rent, and even arranging for re-roofing in the wake of Hurricane Wilma.

The land was not purchased only as a financial investment—it was also an investment in the future of their congregation. Being adjacent to the existing property, the land is ideal for future church expansion. Over the years, many ideas for future development have been entertained—a New Church school, a multipurpose building, condos for church members, or a senior living facility. For now, the congregation is holding onto the property as a source of income, dreaming of the possibilities.

In 1999 the New Church at Boynton Beach made a courageous commitment to the future. Now, with their debt to the General Church paid off in full and on schedule, the congregation's commitment has proved a wise one. The newly paid-off property now has a market value near \$750,000. Income from the apartments can now go to bolstering the congregation's budget, or it can be set aside for future projects.

The purchase of the northern parcel of land allowed the Boynton Beach congregation to dream big while keeping their feet on the ground. Congratulations Boynton Beach!

*Johnny Appleseed Legacy Society*

## FEELING GOOD ABOUT GIVING:

**Doris Brickman Millam**

*By Judy Lopacki, Director of Planned Giving*



In January, I had the immense good fortune to travel from Philadelphia's 20-degree weather to warm and sunny Boynton Beach, Florida to attend Eldergarten. It was a wonderful experience, not only because of the weather.

I was invited to Eldergarten to give an educational seminar on how to make a planned

gift to support the General Church or the Academy of the New Church. But that was only part of why I wanted to attend. I also wanted to meet the people of Boynton Beach, and I sure did!

The first thing on the agenda was a barbe-

### More about Eldergarten

Eldergarten was originally established by Rev. Fred Schnarr for seniors in the Boynton Beach congregation. The program was, as Fred beautifully put it, "To celebrate the age of wisdom by means of instruction and discussion of the doctrines of the New Church, together with the delight of mutual love and friendship."

The annual retreat features guest speakers, discussions, and a number of social events.

cue where I met many new people. Among them were Bob and Gail Brickman, Bob and Naomi Smith (organizers of this annual event), and a lively lady named Doris Brickman Millam.

Doris and I had a number of interesting conversations. She told me about her life and asked many questions about planned giving. Over the next few days we talked about how a planned gift could work for her. Doris was optimistic about the options and before the end of the week she decided to make a contribution by establishing a charitable gift annuity.



LETTER FROM THE EDITOR

## WHY BOTHER?

With our organization undergoing budget cuts and congregations striving for greater independence, why do we still publish *Around the New Church*?

These are times of great change for the General Church.

Some of these changes—employee cutbacks, discontinued programs, slashed budgets—are challenging. It is easy to spend energy mourning the loss of programs or former colleagues. It is easy to point fingers and criticize others for “getting us into this mess” or disparage the methods of those trying desperately to get us out of it.

Other recent changes bring me hope. Leaf through the pages of this newsletter and you will see a few stories that inspire me. They are stories of congregations working together, individuals volunteering their time, visions of a stronger, broader-reaching Church. They are stories of goals and progress and growth.

Growth. The term on everyone’s lips. But why do we want to grow our Church? Do we strive for growth in order to distribute the financial burden or to spread joy? And if our goal is to spread joy, why do we focus on better ways to grow rather than on better ways to spread joy?

As the new editor of this publication, I believe the purpose of *Around the New Church* is to share stories of hope and joy.

Despite economic hardships and budget cuts, I believe it is still worth the cost to publish this newsletter. Especially in tough times, we need stories about success. We need stories that demonstrate our similarities while celebrating our differences. We need stories that bring us together as a Church community.

I invite you to help me spread joy. Share your stories of hope and inspiration and success with me. I’ll share them with others through this publication. There is no telling how far the joy will go.

Chara M. Odhner, Editor, chara.odhner@anc-gc.org

“To feel the joy of another as joy in oneself, that is loving.”  
— Emanuel Swedenborg

### We are now welcoming letters to the editor!

If you have a question or a comment, send it our way. We will share them with others in this publication as space permits. Send your letter to chara.odhner@anc-gc.org or Chara Odhner, PO Box 462, Bryn Athyn, PA 19009.

FROM CONCORD, MASSACHUSETTS

# SCIENCE AND SPIRITUALITY

## The Concord New Church is reaching out with a new discussion series about science and religion.

The New Church of Concord is reaching out to their community in a way that would probably make Swedenborg proud: an open discussion series based on the complementary nature of science and religion. Hosted by the Swedenborg Center of Concord and directed by George Gantz, the Integrating Science and Spirituality (ISAS) discussion series will have a live component in the local community center and an online component that will facilitate world-wide participation.

The goal of ISAS is “to explore the range of scientific and religious thinking and to consider the relevance and implications of new scientific findings to our beliefs and understanding about spirituality.”

The opening session, titled “What Is Truth?,” will examine the concepts of evidence and proof. Participants will explore how these foundational elements of science also serve as the basis for multiple perspectives on spiritual experience.

Each live session will include introductory remarks from an expert on the topic being explored, followed by open conversation about religious and spiritual observations. For those participating from a distance, the live sessions will be recorded and posted on the website.

Materials are already up on the Swedenborg Center’s website, and anyone who wishes to join the discussion is warmly invited. For more information on the series or directions to the live sessions, please visit [www.swedenborgcenterconcord.org](http://www.swedenborgcenterconcord.org).

## Integrating Science and Spirituality Spring Series

### May 2: What is Truth? Led by George Gantz, ISAS Series Director

This opening session will examine the concepts of “evidence” and “proof,” the underpinnings of science and the basis for multiple perspectives on spiritual experience. The relevance of Kurt Godel’s incompleteness theorems will be explored.

### May 16: Biology as an Emergent Phenomenon Led by Dr. Reuben Bell, Physician and Professor of Osteopathy, Director of the Samara Center for Practical Spirituality

The biological sciences have advanced rapidly in the past several decades, and the more we learn, the more profound the complexities have become. Dr. Bell will guide participants through the latest scientific findings and their implications.

### June 6: The Human Brain Led by Dr. Justin Jungé, BA in Psychology from Harvard, PhD from Yale

Advances in brain imaging and a wealth of new scientific methods are bringing the material of brains into increasingly detailed focus. Some researchers believe they will soon be able to explain the phenomenon of consciousness. Dr. Jungé will describe several of the brain-based correlates of thinking and feeling, and discuss the compatibility of free will with material brains and science.

### FURTHER READING

*Proving God: Swedenborg’s Remarkable Quest for the Quantum Fingerprints of Love*, by Edward F. Sylvia. This book delves deeply into the foundations of physics and cosmology. It offers an integrated analysis of the interplay between the spiritual and the natural, drawn directly from Swedenborg’s scientific and theological works.

### FURTHER DISCUSSION

George Gantz will be leading a workshop about ISAS and the complementarities of scientific and spiritual modes of thought at the upcoming General Church Assembly in Bryn Athyn, PA. Visit [www.gcassembly.org](http://www.gcassembly.org) and click on workshops to learn more. His workshop will be held on Friday afternoon, June 24.

## BULLETIN BOARD

**shift**  
Small Changes. Big Difference.

### New Church Journey Announces the 2011-2012 Program

*Shift: Small Changes. Big Difference.*

[www.newchurchjourney.org](http://www.newchurchjourney.org)

This year's 7-week program highlights the Old Testament story of Jacob and contains a powerful theme of reconciliation. Jacob's path involves heartache and wrestling, but also hope and forgiveness. Explore how each part of Jacob's journey models the stages we may experience while on our way to spiritual growth and renewal.

### Bridge Books Award Winners Selected!

This winter, the General Church partnered with the Swedenborg Foundation to offer a book proposal contest. Bridge Book Award winners have been chosen and will be announced in mid-April. See the winners at [www.newchurch.org](http://www.newchurch.org).



### Japan Relief Fund

The Japanese people are experiencing their most serious disaster since the Second World War. Many people are suffering devastating effects of the earthquake and ensuing tsunami. There are small New Church groups in Sendai and Fukushima who are struggling. Please consider making a contribution to support the disaster relief.

#### Send your tax-deductible donations for Japan to:

The Development Office  
PO Box 708, Bryn Athyn, PA  
19009 USA. Make checks payable to The General Church, with "Japan Relief" in the memo line.

### New Church Online Portal Launched!

[www.newchurchgiving.org](http://www.newchurchgiving.org)

Thanks to our technology and finance teams, our online giving portal has been redesigned, expanded, and greatly improved. In addition to giving online, now you can provide us with updated contact information, view your giving history, and register for events through our secure portal. Take a look!

### New Church Life is Back!

The new bimonthly *New Church Life* is in print and has been mailed to subscribers. You can read it online at: [www.newchurch.org/materials/publications/nc-life](http://www.newchurch.org/materials/publications/nc-life). To subscribe, contact Kristine Medley at 267-502-4901 or [kristine.medley@newchurch.org](mailto:kristine.medley@newchurch.org).

NEW CHURCH Life

### GC Assembly in Bryn Athyn, PA

**June 23-26**

[www.gcassembly.org](http://www.gcassembly.org)

Register for the General Church Assembly by mail (using the packet enclosed with this publication) or online. Questions? Contact Hannah Lermite at [hannah.lermite@anc-gc.org](mailto:hannah.lermite@anc-gc.org) or 267-502-4864.

### Bryn Athyn Cathedral Now Streaming Sunday Services Live

[www.brynathyncathedral.org](http://www.brynathyncathedral.org)

Bryn Athyn Cathedral now has live video streaming of their Sunday services. Family service broadcast begins at 9:10 AM Eastern and adult service begins at 10:40 AM Eastern. Visit the Cathedral website, click Live Services.

**CORRECTION:** The November issue of *Around the New Church* contained an article about a day-long Swedenborg Colloquium, which unfortunately omitted an appropriate credit to Roslyn Taylor. Roslyn's article about the colloquium, "The Swedenborg Colloquium: Observations and Reflections," which appeared in the November issue of *The Messenger*, provided information and inspiration for the creation of the article that appeared in *Around the New Church*. We gratefully acknowledge her contributions, and the contributions of Anna Woofenden and Christa Bedford, who assisted Roslyn with her article. To read a copy of Roslyn's extensive and inspiring article, please visit: [www.swedenborgiancommunity.org](http://www.swedenborgiancommunity.org) and click on Messenger.

## Doris Brickman Millam *continued from page 1*

Doris is originally from Glenview, Illinois, where she lived for many years. Doris had two children. Her daughter, Kathy, passed away at the age of nine. Her son, Gary, still lives in Glenview. Doris was educated as a nurse and spent a good part of her career specializing in education and intravenous therapy. She became an expert in her field, giving seminars to train nurses and paramedics locally and traveling to train nurses across the U.S. Doris divorced after twenty years of marriage. When she retired in 1999, she moved to Florida to be near her twin sister, Audrey.

### Charitable Gift Annuities

A charitable gift annuity can be established with as little as \$10,000, and the percentage you receive as income can be around 5-9%, a little better than a CD earns! You receive a tax deduction the year the gift is established, and a portion of the annual payments are tax free.

*If you are interested in learning about ways a planned gift might work for you, please contact me at 267-502-2423 or [judy.lopacki@anc-gc.org](mailto:judy.lopacki@anc-gc.org).*

Although Doris lives quite modestly, she still found a way to give back. She says cheerfully, "I have always been very smart with my money, and I love the New Church. I am grateful for my years at the Academy, which enabled me to go on to complete my bachelors in nursing and masters in education. It feels good to give back." Her charitable gift annuity will now provide her with an annual income at a rate based on her age and fixed for life. When Doris passes, the remainder will benefit the Church and the Academy.

Doris and I have become friends, and I hope to see her next time I visit the beautiful New Church community at Boynton Beach. In the meantime, I feel privileged to witness the impact of the many donors who, like Doris, have left a legacy to their Church.

## FROM AROUND THE NEW CHURCH

Which aspects of New Church worship, traditions, and community are universal and which aspects vary from congregation to congregation and from person to person? This recurring column will explore the similarities that bring us together and the differences that make us unique. This issue's subject: music.

# MUSIC AROUND THE NEW CHURCH

## Craig McCardell, Oak Arbor Church



**ROCHESTER, MI**—With a dynamic congregation in changing times, the Oak Arbor Church still maintains a single, inclusive worship service. The man in charge of the worship experience—and working to blend music and message in harmony—is Craig McCardell.

Striving to be RELEVANT

**Tell me about your congregation.** We don't offer separate "traditional" and "contemporary" services. Instead, we've developed a single blended service that combines traditions with gradual changes. This helps us strengthen our congregation and build community while welcoming a variety of worship styles.

**Tell me about your musicians.** Since we have varying types of music for each service, we invite many different musicians to play for worship. We have a choir, a small worship band, and many other musicians and singers. For example, we have an excellent violinist who occasionally plays fiddle tunes for us.

**Tell me about your musical style.** Our music changes every week. One Sunday you may hear a traditional New Church hymn, the next week a contemporary Christian song, and then some inspirational Gospel music. Whatever the style, we are careful with every song we select; though a song doesn't have to directly mention God, it needs to speak to the message of the service.

**What are your goals for music and worship at Oak Arbor?** We focus on tying music, message, and ritual together in a unified worship experience. We want our services to be relevant in people's lives and for our congregation to leave each week thinking: "I learned something and now I'm inspired to apply it to my life."

## Randy Wagner, New Church LIVE



**BRYN ATHYN, PA**—This winter, New Church LIVE restructured, shifting many aspects of congregational leadership into new hands. One change is that leadership of the beloved New Church LIVE band is now in the capable hands of Randy Wagner.

Striving to be INCLUSIVE

**Tell me about your congregation.** At New Church LIVE we are building our church community from the ground up, so we don't take anything for granted. Volunteers are involved in every aspect of Sunday church—from music to ushering. We have been through a lot of changes recently, but those changes are giving us the chance to reinvent ourselves.

**Tell me about your musicians.** Our band changes week to week. Some of our musicians are in another band with me, so we sneak in church song rehearsals while practicing for other gigs. We have had a number of different congregation members sing or play with us, including a few fantastic soloists.

**Tell me about your musical style.** We play a lot of reggae because it is upbeat and inspiring. We've also found some great bluegrass tunes. I try not to repeat songs too often and to always have something different and special.

**What are your goals for music at New Church LIVE?** Before I took on leadership, the New Church LIVE band already had a reputation for great music. I want to maintain the quality level while making it a little more inclusive. We welcome any musicians who want to join us. Most of all, we want the congregation and band members to feel welcomed and included.

## NEWS NOTES



**ANNIVERSARIES:** On March 21, two couples celebrated 30th wedding anniversaries! Thirty years ago Deno and Carol (Birchman) Brannon were wed at Bryn Athyn Cathedral on a crisp winter afternoon in Bryn Athyn, PA.



Just a few hours later, Len and Jamie (Magro) Rose walked down the same Cathedral aisle and said "I do!" Congratulations to both couples for their commitment on this 30th anniversary!



**BORN:** Beautiful baby girl Bailey Mae was born to Seth and Jessica (Hasen) Odhner on February 24. She weighed in at a whopping 9 lbs., 8 oz.!

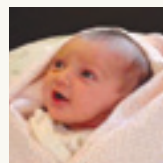


**BORN:** Cameron and Ali (Smetanick) Childs, along with children Grace and Duncan, welcomed baby girl Adeline Leigh to their family on March 2.

**BORN:** On January 15, Jason and Erin (Childs) Parker were blessed with the arrival of their first child, Adam Wallace. The cheerful baby boy weighed a healthy 6 lbs., 15 oz.



**BORN:** On March 18, Darryl and Emily (Glunz) Hasen welcomed their first son, Oscar Briggs. The healthy baby boy weighed 8 lbs., 10 oz. Older sister Sadie is very proud.



**BORN:** A bright-eyed baby girl, Tallulah Belle, was born to overjoyed parents Bret and Jessica (Ebert) Bostock on January 19.

## Ethan Daum, New Way Church



**AUSTIN, TX**—On February 27, New Way Church held its official launch in Austin, Texas. On the fledgling congregation's launch team and working to help the new group define and strengthen its musical style is Ethan Daum.



**Tell me about your congregation.** We are brand new. On a given Sunday we have 20–25 attendees. At our launch we had around 60 people, 10 or 12 of those people were new to the Church and found us through our outreach and marketing efforts. Since our congregation is new, I'm still working on bolstering the singing confidence of our members. I've been making recordings of our often-sung songs—the band uses them to practice and the congregation can listen to them throughout the week to learn the songs.

**Tell me about your band.** I play guitar, our pastor has played bass a few times, sometimes we have conga drums or another guitar or two. As for vocals, we've got a congregation member who loves singing with us.

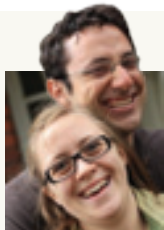
**Tell me about your musical style.** We are blending songs I grew up with at Bryn Athyn's contemporary service and at New Church summer camps with some popular Christian music. I try to find a special song each week that is particularly relevant to the message.

**What are your goals for music at New Way?** Like everything we do at New Way, I want our music to be genuine. We also want to get as many congregation members involved as possible. Austin is the live music capital of the world, so I'm also inviting local musicians to come to church and play with us. One of our occasional bassists is new to our church; he lives in my apartment building. I heard him playing one of my favorite church songs in the hall and I asked him to join our church band.

*From interviews with Craig McCardell, Randy Wagner, and Ethan Daum*



**MARRIED:** Congratulations to Gabriely (Couto) and Rhys Asplundh, who were wed February 29 at Bryn Athyn Cathedral in Bryn Athyn, PA.



**MOVED:** After six months of visa troubles, Rev. Malcolm and Abigail (Echols) Smith and their daughter Mara are finally settled into their new pastorate in Westville, South Africa. Malcolm is now serving as Assistant Pastor of New Church Westville.

*Send your news notes to [chara.odhner@anc-gc.org](mailto:chara.odhner@anc-gc.org)*



*Caring for Marriage*

## ON COMMITMENT

**“And I John saw the holy city New Jerusalem, coming down from God out of heaven, prepared as a bride adorned for her husband.”**

**– REVELATION 21:2**

*By Lori Odhner, Director of Caring for Marriage*

Once I went to a wedding and slipped in near the back. I was not especially close to the couple (though I certainly wished them well), but when I saw the bride sweeping up the steps I felt moved by her exquisite beauty. She was so bright, I actually looked up to see if there was a stream of light coming down from a window. I had seen this woman many times on ordinary days, but today...today she was the form of love itself. The eyes of every person in the room were drawn to her by an inexplicable force. She was what my heart needed: she was at once unself-conscious, innocent, and lovely. Her eyes were on her husband, leaving all of us free to look at her.

How is it that the love of one woman for her husband can swell to touch each of the hundreds of people present?

In the Bible, marriage is compared to the Church. When I ponder what qualities they have in common, I think of commitment. A bride has chosen to give her heart to one man, and that commitment is visible on her face, making her beautiful. As a church, we are invited to give our devotion to the Lord above all else and, when we do, that love shines out for everyone to see.

When you say “I do,” you are signing up for a lifetime of work. It may not feel like toil in the beginning, but a few years into it you realize that marriage involves a conveyor belt of repetitive duties with no end on the horizon. Did you think this through? Probably not. Our participation as a church can seem that way too. Contribute again? Serve more? It may feel as if we were too starry-eyed to read the fine print in the beginning, but I think God knows it is only through years of effort that He can transform natural beings into celestial material. There is no express line.

The loveliness that shone down on the bride that day was precisely that: love. As she radiated love for her husband, the Lord poured His love down on her in an inexhaustible supply. And this love will continue to shine as long as she keeps her face turned toward heaven.

The quality that makes a church different from a country club or a crowd at the mall is love. When all of our faces and hearts are riveted on the Lord God Jesus Christ, His power and unceasing devotion shines down on us with a beauty that covers us with innocence and unselfconsciousness. It is not about us. It is about commitment, about serving, and about the inextinguishable supply of love.

# UPDATES FROM THE HEALTHY CHURCH MATCH

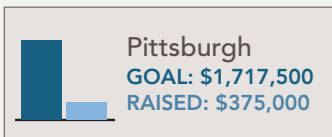


FROM PITTSBURGH, PENNSYLVANIA

## BREAKING GROUND

Society members are pitching in with donations and with shovels at the Pittsburgh New Church.

On December 5, the Pittsburgh society broke ground on a building project to create a new classroom and multipurpose room, an elevator, a garage conversion, and much-needed storage space for the church and school.



The project has been funded with the help of many generous donors. We are grateful to everyone and glad that our supporters stuck with us throughout a *very* long, convoluted permit process. Through individual donations to the Healthy Church Match campaign, we raised \$117,500 toward the addition and handicap-accessibility project. The General Church matched this with another \$117,500.

We've already completed some related building improvements, leveraging our hard-raised funds by harnessing the muscles and brains of some of our Eagle Scouts. David Uber and friends rebuilt a retaining wall. Garrett Olson led an effort to build a handicap-access ramp by our school door. Andrew Stein put together a plan and team to build a new outdoor shed to store equipment for PE and for the school garden. Fathers, uncles, cousins, and fellow society members pitched in mightily, too; it looked like a good old-fashioned barn-raising at times.

Now, as the new construction rises, our strategic focus is shifting to Pittsburgh's other Healthy Church Match component: an effort to raise a significant endowment to replace the General Church grant and to support our school's future growth. Our school runs on committed families, dedicated teachers, countless volunteer hours, and the generosity of others: grandparents, family, friends, and alumni who help provide the opportunity for a New Church education to the next generation.

To date we have raised a total of \$375,000. With the General Church match, this \$750,000 is a great start toward our target. The Pittsburgh New Church School is celebrating its 125th year, and the Healthy Church Match Program will help underpin the next 125 years, or 250!

*Steve David, on behalf of the Executive Committee of the Pittsburgh New Church*



FROM KEMPTON, PENNSYLVANIA

## A SMALL SOCIETY WITH BIG DREAMS

Kempton New Church is working steadily to become self-supporting while keeping school tuition affordable.

Our Kempton society is still young. We are still finding our way. Through the years, we have tried to let uses lead while looking to the Lord to provide the means. Providentially, this ap-



proach has succeeded as we have added grades to our school and tried to keep pace with their costs. The Kempton society has lived conservatively, relying on contributions and grants to help balance the tuition costs for our school. It has proven a challenge, but thanks to the support of many friends and members, we have been blessed with a thriving church and school population.

The Healthy Church Match comes along at a great time for Kempton. Our goal is to build endowment for support of the school, which will help us narrow the gap between our income and our expenses. We are trying hard to respect the General Church's request for us to become self-sufficient. The Healthy Church Match allows us to continue our uses while strengthening our financial independence. It is an opportunity we are grateful for.

The Kempton New Church has many dreams. On a natural level, we dream about keeping tuition affordable for families who desire a New Church education. We dream about developing our educational offerings and improving our physical spaces. On a deeper level, we hope for what all New Church people hope for—a life centered and guided by the Heavenly Doctrines.

Only the Lord knows the future of this little church and school. We are heartened by second generation folks and newcomers alike who have joined with the original founders to support this society. Our heartfelt thanks go to our supporters and the General Church for the opportunity of the Healthy Church Match. It is a great and exciting challenge for us.

*Mark Wyncoll, Principal of Kempton New Church School*

# TEMA'S AMBITIONS FOR THE FUTURE

The newest congregation in the Healthy Church Match Program has modest fund-raising goals backed by a solid strategic plan.

With a local fund-raising goal of \$100,000 (USD), the Tema New Church has the most modest goal in the Healthy Church Match Program. Yet their strategic plan—and their hope for the future—is marvelously ambitious and promising.

Tema  
GOAL: \$100,000

Since 1957, when it became the first Sub-Saharan colony to gain independence from Great Britain, Ghana has been a country on the rise. Though early political struggles negatively affected economic growth, an abundance of natural resources and the tireless effort of the Ghanaian people has contributed to strong economic and social progress. Now politically stable, Ghana is favorably positioned for continued growth and development.

Tema is Ghana's leading seaport and one of the busiest ports in West Africa. The city is strategically placed on a main highway that runs along the coast. The Tema New Church is located in an area of the city dedicated to churches and schools. While this gives them high visibility, it also brings a good amount of healthy competition. To sustain and grow their church and school, the Tema congregation must be able to compete in an increasingly discerning market.

The congregation's primary method of evangelization is their school. The Tema New Church School has been rated grade "A" by the Ghana Education Service and their distinctive approach to education is gaining respect from Ghanaian parents. Currently there are 260 enrolled students and, with a policy of mandatory church attendance for students, the church community grows with the school.

The Tema New Church has developed a strategic plan that, over the next five years, aims to grow their active membership from around 200 to 400 and their school enrollment from 260 to 500. The plan is hinged on a diverse and creative local fund-raising plan to raise \$100,000. This sum, which the General Church will double through the Healthy Church Match Program, will allow the congregation to build an endowment, upgrade and expand their school facilities, develop new school programs, build a church social hall, and undertake a number of new outreach initiatives.

With a solid set of strategic initiatives, an active church membership, and a clear fund-raising plan, the Tema New Church plans to take its already thriving church and school community to even greater heights with a reasonable \$200,000 price tag.

*Siri Griffin, adapted from the Tema New Church's Strategic Plan*

## TEMA NEW CHURCH'S Strategic Initiatives

### ENDOWMENT INITIATIVE: \$25,000

- The interest from an endowment will help Tema offer competitive salaries to attract and retain quality teachers. The endowment will also help bring them closer to self-sufficiency and sustain their ability to offer financial aid to their students.

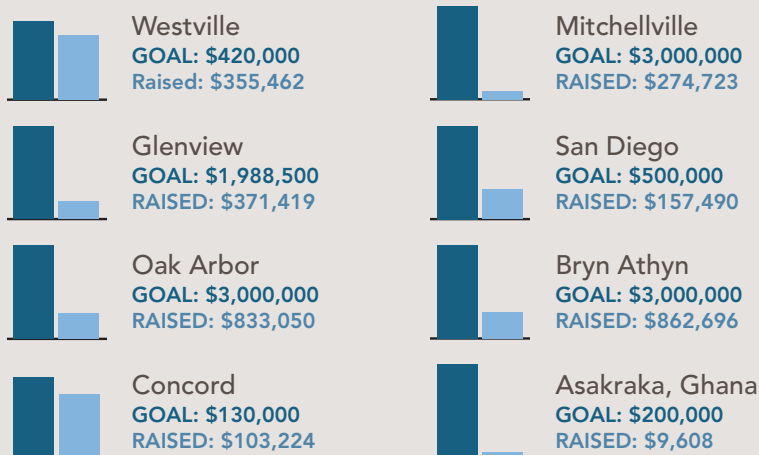
### CHURCH INITIATIVES: \$40,000

- Completion of a multi-purpose hall that will serve as a conference and social center for the church.
- Organization of periodic public preaching "crusades," a popular form of evangelization in Ghana.
- Production and distribution of New Church pamphlets designed specifically for a Ghanaian audience.

### SCHOOL INITIATIVES: \$135,000

- Construction of a preschool, which will act as a feeder for their elementary school and increase their competitive edge.
- Construction and outfitting of a technical workshop to teach subjects such as woodwork and the culinary arts. Some students do not have the means to continue their education upon graduation, and this workshop will allow the school to equip them with income-generating skills.
- Upgrades to the computer lab. This project includes purchasing thirty new computers and five printers, providing internet access, and installing an air-conditioning unit in the lab.
- Construction and outfitting of a science lab. A good science program is a highly sought-after element for Ghanaian parents, and the lab will help the school compete for prospective students.
- Expansion and improvement of the library.
- Construction of three new classrooms for the Junior Secondary students.
- Conversion of the old library room into a faculty lounge.
- Expansion and improvement of the sports and recreational facilities.

## HEALTHY CHURCH MATCH Congregational Goals and Progress



Goal is the amount that each congregation has applied to have matched through the Healthy Church Match program. Raised is the reported amount that each congregation has raised toward this goal as of 12/31/10. Sums do not include matching funds from the General Church.



**DEVELOPMENT**  
*Supporting The Academy of the  
New Church and The General  
Church of the New Jerusalem*

Development Office  
PO Box 708  
Bryn Athyn, PA 19009 USA  
development@anc-gc.org  
267-502-2647

**!** You'll need to let us know if you want to continue to receive *Around the New Church*. To stay on our mailing list, return the enclosed postcard or email [development@anc-gc.org](mailto:development@anc-gc.org).

**FROM SEATTLE, WASHINGTON**

## **NEW BUILDING, UNDER CONSTRUCTION**

**After years of renting, Light for Life New Church just signed a five-year lease. Now they are renovating their new storefront building into a beautiful space for worship and fellowship.**

Light for Life New Church in Seattle, Washington is under construction. After years of renting space for church services, they recently signed a five-year lease on a building that will give them a worship and fellowship space of their own.

Since the congregation was planted, they have rented space each Sunday morning to hold worship services. Last year they crunched some numbers and found that leasing space can be almost as affordable as renting.

Leasing space can feel like owning. Of course, the investment isn't as lasting, but the day-to-day functionality is much like owning a building. No more packing and unpacking Sunday School materials. No more setting up and taking down chairs. Finally, a large sign affixed to the front of the building to invite people in, an office for the pastor, and a weekday meeting space. Now the congregation will have a place that feels like home.

After many discussions and a search for the ideal space, Light for Life settled on a building in the Columbus City area of downtown Seattle. Their new space has store-front exposure in a bustling, up-and-coming area of the city. It is located between a popular farmer's market and a public library, in a family-friendly neighborhood full of restaurants, yoga studios, parks, and locally-owned businesses. In this new location, Light for Life will be one of our most visible congregations.

Their new building used to be a grocery store. Light for Life is leasing only a third of the large space, so the property owners installed



*Light for Life's new building is located just a few doors down from these friendly shops and restaurants in downtown Seattle.*

a dividing wall and provided the congregation with \$30,000 for renovations. The new space will include a large sanctuary, Sunday School rooms, an office for the pastor, a welcome area with a bookstore, and a spacious fellowship hall.

Dedicated congregation members have been volunteering their time to help with everything from blueprints to hard labor to technology installation. Construction began this winter, and will continue through the spring. For now, the congregation is biding their time, enjoying the planning and constructing, preparing for full-fledged outreach once their new building is complete.

*From an interview with Nathan Howard*